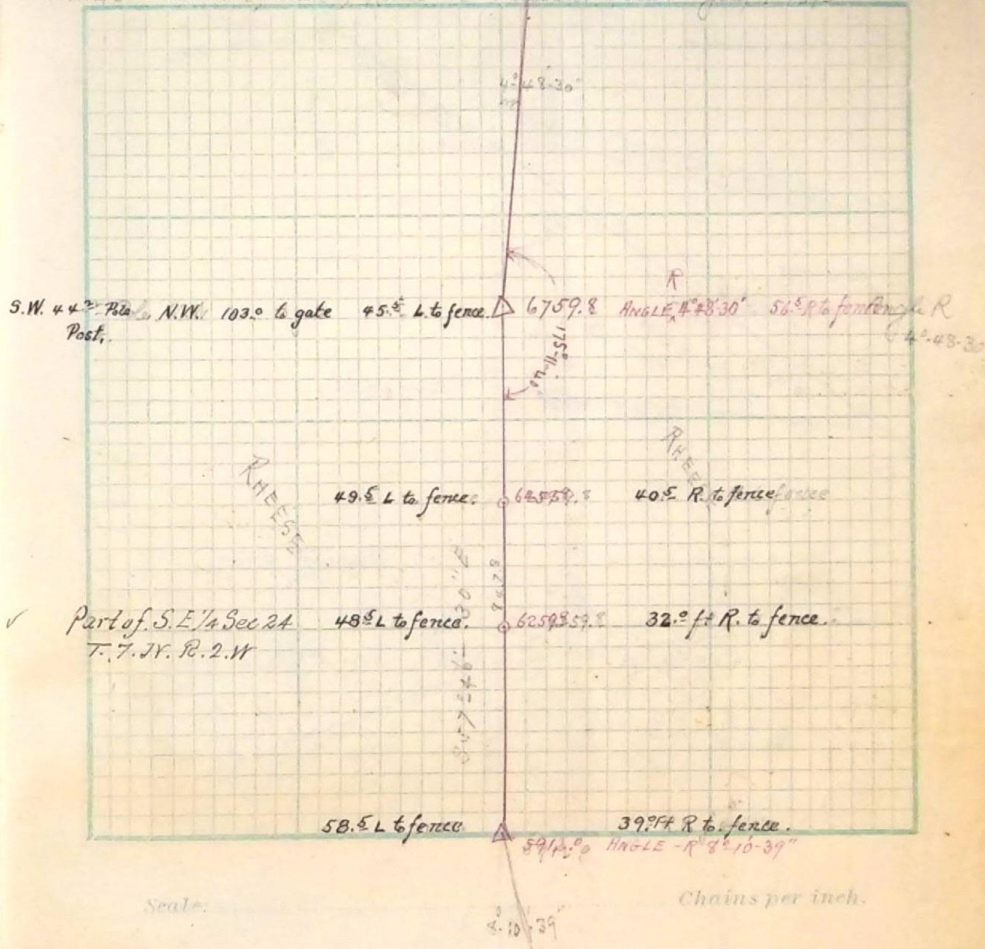


FINAL Location of County Road from Pleasant View. June 1-1892



Simon E. Halverson to James Pycraft part of N.W. 1/4 Sec 24
 Sp. 6 N. R. 2. W, 1sq. m. 55 ch. S. 400 1/100 of 1 ch. N. from N.E. cor
 said 1/4 Sec, S 12.95 N 9.98 ch N 14 E 14.00 ch to mid line
 of mid water creek

Notes County Road Hot Springs to North Ogden.
 Surveyed Dec. 1889.

110143 110143 110143 110143 110143 110143 110143 110143 110143 110143